

# KATALOG PROIZVODA PRODUCT CATALOG



 **RETA**



# **KATALOG PROIZVODA**

*PRODUCT CATALOG*



## Uvod

---

Zahvaljujemo na prilici da Vam predstavimo asortiman proizvoda tvrtke Reta d.o.o.

Naša specijalnost je proizvodnja žice i to prvenstveno paljene žice, proizvoda od žice, čavala i građevinskog okova za prozore i vrata. U ovom katalogu pronaći ćete detaljni prikaz artikala iz našeg proizvodnog programa te njihove pojedinačne specifikacije.

Reta je proizvodna (i prodajna) tvrtka koja na tržištu djeluje već više od 20 godina. Klient je oduvijek bio i trajno ostaje u središtu našeg fokusa. U poslovanju se od samog početka vodimo načelom da je jedini način stvaranja prave vrijednosti oslušivati stvarne potrebe kupaca i neprestano podizati ljestvicu kvalitete. Kontinuirano ulažemo u proizvodnju. Također, svakodnevno radimo na razvoju i širenju asortimana, pratimo trendove i uvodimo nove tehnologije.

Naše poslovne vrijednosti i načela pozicionirali su nas kao vodećeg proizvođača okova, brava i proizvoda od paljene žice u regiji. Kao potvrdu kvalitete i vrijednosti ističemo da Reta posjeduje CE 14 592 i EPAL certifikate za čavle. Naši proizvodi plasirani su u Sloveniji, BiH, Srbiji, Crnoj Gori i Makedoniji, ali su prepoznati i šire pa valja naglasiti da izvozimo i u zemlje izvan regionalnih okvira poput Njemačke.

## Introduction

---

*Thank you for the opportunity and privilege to introduce the product assortment offered by Reta ltd.*

*We specialize in producing wire, primarily annealed wire, wire products, nails and construction fittings for windows and doors. In this catalog you will find a detailed list of items from our product range together with their respective specifics.*

*Reta prides itself as a client focused manufacturing and trading company, successfully operating for more than 20 years now. Since the very beginning our business model has followed the principle that the only way to create something of true value is to pay attention to the buyers' real needs and keep raising the bar for quality. We constantly invest in our production processes. Also, we consistently work on developing and expanding our product range, follow the latest trends and introduce new technologies on a daily basis.*

*Our company values and business principles have made us the leading manufacturer of fittings, locks and annealed wire products in the region. Reta possesses CE 14 592 and EPAL certificates for nails, confirmation of quality and value. Reta products are sold in Slovenia, Bosnia and Herzegovina, Serbia, Montenegro and Macedonia, but are also renowned and exported outside the regional boundaries, for instance to Germany.*

***Dobrodošli u  
Reta svijet...***

---

Pristupačne cijene i osoblje koje je uvijek spremno pomoći kvalitetnim stručnim savjetom ili preporukom jamče ugodnu i korisnu kupovinu koja daje rezultate.

Pozivamo Vas da pregledate katalog i slobodno nas kontaktirate ako biste željeli saznati više detalja o nekom od naših proizvoda/sustava. Naš cilj je ispuniti zahtjeve kupca pružajući najbolju moguću uslugu po najboljoj cijeni. Veselimo se Vašem upitu.

Za više informacija, molimo posjetite našu web stranicu [www.reta.hr](http://www.reta.hr).

Zahvaljujemo na Vašem vremenu i razmatranju.

S poštovanjem,

**Reta d.o.o.**

---

*Affordable prices and approachable staff who are always ready to offer expert advice or recommendation guarantee a pleasant and useful shopping experience that is bound to produce results.*

*We invite you to browse the catalog, and if you would like more detailed specifications for any of the systems, feel free to contact us. We aim to meet the objective by giving the best possible service at the best price and we are looking forward to hear from you.*

*For more information, please visit our website [www.reta.hr](http://www.reta.hr).*

*Thank you for taking time to consider us.*

*Sincerely,*

**Reta ltd.**



***Welcome to  
Reta world...***

## SADRŽAJ

---

<b>GRAĐEVINSKI OKOV.....</b>	<b>8</b>
Klanfe/"T" vijak .....	9
Svrdlo/sidro/navojna šipka .....	10
Nosač grede.....	11
Potpore/spojne ploče .....	13
Šahovi.....	14
<b>GRAĐEVINSKA KOLICA I MJEŠALICE ....</b>	<b>15</b>
<b>GRAĐEVINSKE SKELE .....</b>	<b>18</b>
Sistem RAM 2 .....	20
Dodatna oprema za skele.....	28
<b>POCINČANA TRAKA I SPOJNICE.....</b>	<b>30</b>
<b>INFO .....</b>	<b>32</b>

## CONTENTS

---

<b>CONSTRUCTION HARDWARE.....</b>	<b>8</b>
<i>Cramp iron / "T" bolt .....</i>	<i>9</i>
<i>Bore / anchor / threaded rod .....</i>	<i>10</i>
<i>Beam hanger .....</i>	<i>11</i>
<i>Brace / connecting plate .....</i>	<i>13</i>
<i>Manhole.....</i>	<i>14</i>
<b>WHEELBARROWS AND MIXERS .....</b>	<b>15</b>
<b>CONSTRUCTION SCAFFOLDING .....</b>	<b>18</b>
<i>System RAM 2 .....</i>	<i>20</i>
<i>Scaffolding accessories .....</i>	<i>28</i>
<b>ZINCAL TAPE AND JOINTS .....</b>	<b>30</b>
<b>INFO .....</b>	<b>32</b>

## LEGENDA / LEGEND

### BOJA COLOR



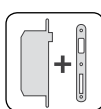
### PAKIRANJA PACKAGING



težina/kg  
weight/kg



broj  
komada  
PCS



pakiranje uključuje  
bravu i prihvatnu ploču  
*Packaging includes  
lock and Strike plate*

### VRSTE ČAVALA TYPES OF NAILS



glatki  
smooth shank



uvijeni  
screw



ring

### PUNJENJE MAGAZINE



šaržirani čavli na žici  
collated nails on a wire



klamerica  
staples



šaržirani čavli na plastici  
collated nails on plastics

### NAGIB ČAVLA NAIL ANGLE



### OTVOR OKA PLETIVA MESH SIZE



pletivo sa otvorom oka 50x50  
mesh size 50x50



pletivo sa otvorom oka 60x60  
mesh size 60x60

### VISINA PLETIVA MESH HEIGHT



visina pletiva do 3000 mm  
mesh height up to 3000 mm

### PROMJER ŽICE WIRE DIAMETER



promjer žice Ø 2,2 mm  
wire diameter Ø 2,2 mm

### CERTIFIKATI CERTIFICATES



Oznaka potvrđuje da proizvod ispunjava bitne zahtjeve za sigurnost potrošača, zdravlja ili zaštite okoliša, kao što je određeno po smjernicama, ili propisima EU.

*Label certifies that the product meets essential requirements for consumer safety, health or the environment, as determined by the guidelines, or the EU regulations.*



Epal palete su standardizirane palete, dimenzije 1200 x 800 x 144 mm

*Epal pallets are standardized pallets with dimensions 1200 x 800 x 144 mm.*

### VRSTE OTVORA TYPES OF OPENINGS



ključ  
key



cilindar  
cylinder



WC

### OSTALO OTHER



baterija  
battery



plin  
gas

### OBRADE FINISHING



F1 boja srebra  
Silver



F2 boja champagne  
Champagne



F4 boja bronce  
Bronze



PM06 crna  
Black



PM05 bijela  
White



smeđi  
Brown



žc žuto-cinčano  
yellow zinc plated



BC bijelo-cinčano  
white zinc plated



INOX inox  
stainless steel



Ni niklano  
nickel-plated



Cu pobakreno  
coppered



Zn cinčano  
galvanized



PVC PVC



Ms messing  
brass



Cr krom  
chrome



Cr/Mat krom matiran  
chrome matt



**GRAĐEVINSKI OKOV**  
*CONSTRUCTION HARDWARE*





**Tesarska klanfa (Fe) / Cramp iron (Fe)**


N	Dužina L / Length L (mm)					Pakiranje / Packaging (kom/pcs)
	200	250	300	350	400	
10	200	250	300	350	400	25
12	200	250	300	350	400	

**Vijak za pričvršćivanje drvenih greda za betonske podloge  
 VGT (FE) ("T" VIJAK) / Bolt for fastening wooden beams onto concrete  
 surfaces VGT (FE) ("T" BOLT)**


N	Dužina L / Length L (mm)							Pakiranje / Packaging (kom/pcs)
	200	250	300	350	400	450	500	
12	200	250	300	350	400	450	500	25
14	200	250	300	350	400	450	500	
16	200	250	300	350	400	450	500	



Svrđlo za bušenje rupa u zemlji "T" ručka  
Bore for drilling holes in the soil "T" handle (Zn)



Zn

Sidro (Ø) Bore (Ø)	Cijev (Ø) Tube (Ø)	Dimenzija T (šxv) Dimension T (wxh) mm
105	20	500 x 1100
170	20	500 x 1100
200	20	500 x 1100

Sidro za sidrenje u zemlji FI 14/700/170  
Anchor for soil anchoring FI 14/700/170 ZN



Zn

Sidro (Ø) Bore (Ø)	Cijev (Ø) Tube (Ø)	Dimenzija T (šxv) Dimension T (wxh) mm
170	14	700

Navojna šipka DIN 975 / Threaded rod DIN 975



M	Dužina L / Length L (mm)
4	1000
6	1000
8	1000
10	1000
12	1000
14	1000
16	1000
18	1000

## Nosač za gredu fiksni UB / Fixed beam hanger UB



Zn

Tip - Dužina L Type - Length L (mm)	Širina / Width (mm)	Debljina lima Sheet metal thickness (mm)	Pakiranje Packaging (kom/pcs)
100	95	3,00	10
120	95	3,00	
140	95	3,00	
160	95	3,00	

## Nosač za gredu fiksni NB / Fixed beam hanger NB



Zn

Tip - Dužina L Type - Length L (mm)	Širina / Width (mm)	Debljina lima Sheet metal thickness (mm)	Pakiranje Packaging (kom/pcs)
100	95	3,00	10
120	95	3,00	
140	95	3,00	
160	95	3,00	

## Nosač za gredu podesiv po širini UB / Beam hanger, adjustable width UB



Zn

Tip - Dužina L Type - Length L (mm)	Širina / Width (mm)	Debljina lima Sheet metal thickness (mm)	Pakiranje Packaging (kom/pcs)
120-180	95	3,00	10

## Nosač za gredu podesiv po širini NB / *Beam hanger, adjustable width NB*



Tip -Dužina L Type - Length L (mm)	Širina / Width (mm)	Debljina lima Sheet metal thickness (mm)	Pakiranje Packaging (kom/pcs)
120-180	95	3,00	10

Zn

## Nosač grede vijenca zidni fiksni (NG-V-F) *Fixed wall-mounted cornice beam hanger (NG-V-F)*



Tip / Type (mm)	Debljina lima Sheet metal thickness (mm)
100	3,00
120	3,00
140	3,00

Zn

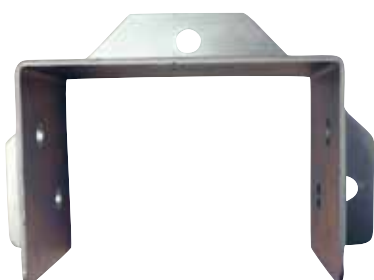
## Nosač grede zidni fiksni unutarnje uho UU (NG-Z-F-UU) *Fixed wall-mounted beam anchor, inner UU (NG-Z-F-UU)*



Tip / Type (mm)	Debljina lima Sheet metal thickness (mm)	Pakiranje Packaging (kom/pcs)
80	2,50	10
100	2,50	
120	3,00	
140	3,00	
160	3,00	

Zn

## Nosač grede zidni fiksni vanjsko uho VU (NG-Z-F-VU) *Fixed wall-mounted beam anchor, outer VU (NG-Z-F-VU)*



Tip / Type (mm)	Debljina lima Sheet metal thickness (mm)	Pakiranje Packaging (kom/pcs)
80	2,50	10
100	2,50	
120	3,00	
140	3,00	
160	3,00	

Zn

Spojna ploča / *Connecting plate*



Tip D / Type D (mm)	Širina / Width (mm)	Debljina lima Sheet metal thickness (mm)
120	50	2,50
160	60	2,50
180	90	2,50
200	90	3,00

Zn

Kutna potpora ojačana PK-I-O / *Angle brace, reinforced PK-I-O*



Tip D / Type D (mm)	Širina / Width (mm)	Debljina lima Sheet metal thickness (mm)
60 x 60	50	2,50
80 x 80	60	2,50
80 x 80	80	2,50
100 x 100	90	3,00

Zn

Građevinska žabica za oplatu s kajlom bojana

*Construction rapid clamp for plating with a blocking element, painted*



Natezač za građevinske žabice

*Strainer for construction rapid clamps*



## Šaht poklopac bez ruba bojani / Manhole cover with no edge, painted



Tip - Dužina Type - Length (mm)	Širina / Width (mm)	Debljina lima (rebro) Sheet metal thickness (mm)
500	500	3,00/4,00
600	600	

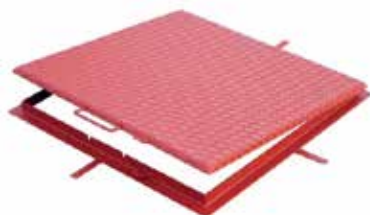
## Šaht poklopac bez ruba / Manhole cover with no edge



Tip - Dužina Type - Length (mm)	Širina / Width (mm)	Debljina lima (rebro) Sheet metal thickness (mm)
500	500	3,00/4,00
600	600	

Zn

## Šaht poklopac s rubom bojani / Manhole cover with an edge, painted



Tip - Dužina Type - Length (mm)	Širina / Width (mm)	Debljina lima (rebro) Sheet metal thickness (mm)
500	500	3,00/4,00
600	600	

## Šaht poklopac s rubom / Manhole cover with an edge



Tip - Dužina Type - Length (mm)	Širina / Width (mm)	Debljina lima (rebro) Sheet metal thickness (mm)
500	500	3,00/4,00
600	600	

Zn

## Šaht poklopac uljni za polaganje keramika Manhole cover, oil-type, galvanized for the laying of ceramics



Tip - Dužina Type - Length (mm)	Širina / Width (mm)	Debljina lima (rebro) Sheet metal thickness (mm)
300	300	3,00/4,00
400	400	
500	500	
600	600	

Zn



GRAĐEVINSKA KOLICA I MJEŠALICE  
*WHEELBARROWS AND MIXERS*



Građevinska kolica LIV / *Wheelbarrow LIV*

---



Kotač za građevinska kolica / *Wheelbarrow wheel*

---



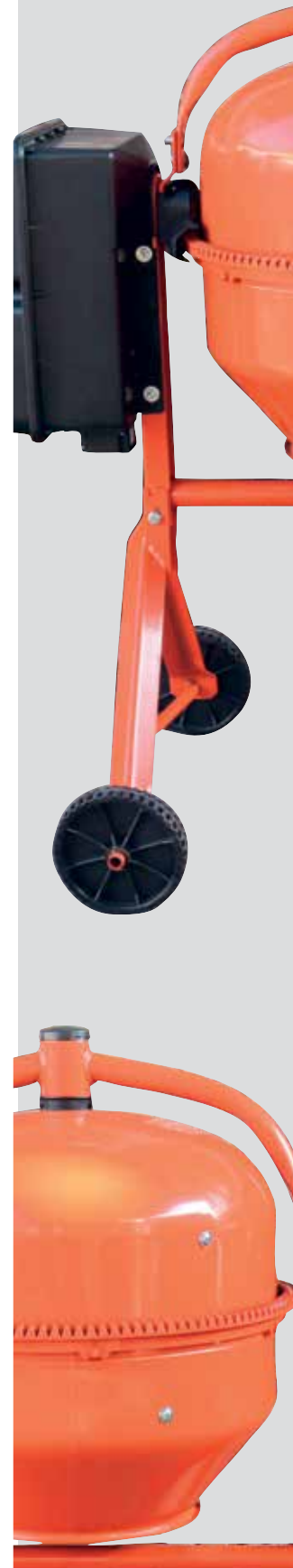
Građevinska kolica pocinčana / *Wheelbarrow*

---





Mješalica za beton 130 litara / Concrete mixer 130 liters





**GRAĐEVINSKE SKELE**  
*CONSTRUCTION SCAFFOLDING*



## GRAĐEVINSKE SKELE

### KARAKTERISTIKE GRAĐEVINSKE SKELE

Svi elementi građevinske skele mogu se slagati po potrebi u cjeline uz primjenu svih standarda sigurnosti na maksimalnu visinu građevinske skele do 24 metra i dostupne su u aluminijskoj i čeličnoj verziji s više mogućnosti kombiniranja materijala podova.

ČELIK



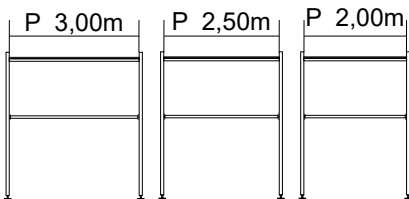
ALUMINIJ



### MODELI GRAĐEVINSKIH SKELA

#### Model P

kompatibilno s Plettac sistemom skela



### CERTIFIKATI

Građevinske skele certificirane su za hrvatsko tržište i zadovoljavaju norme EN 12810-1, EN 12811, EN 10204 te CEE 97,23.

## CONSTRUCTION SCAFFOLDING

### CONSTRUCTION SCAFFOLDING CHARACTERISTICS

All construction scaffolding elements can be arranged as needed, applying all safety standards to a maximum construction scaffolding height up to 24 meters and are available in aluminum and steel versions with multiple options for combining flooring materials.

STEEL



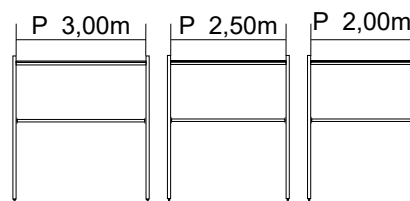
ALUMINIUM



### CONSTRUCTION SCAFFOLDING MODELS

#### Model P

compatible with Plettac scaffolding system



### CERTIFICATE

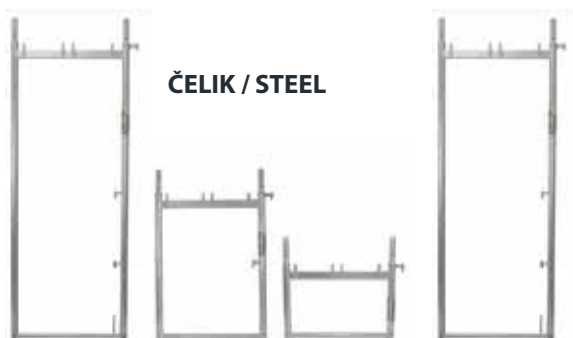
Construction scaffolding are certified for croatian market and they satisfy norms EN 12810-1, EN 12811, EN 10204 and CEE 97,23.





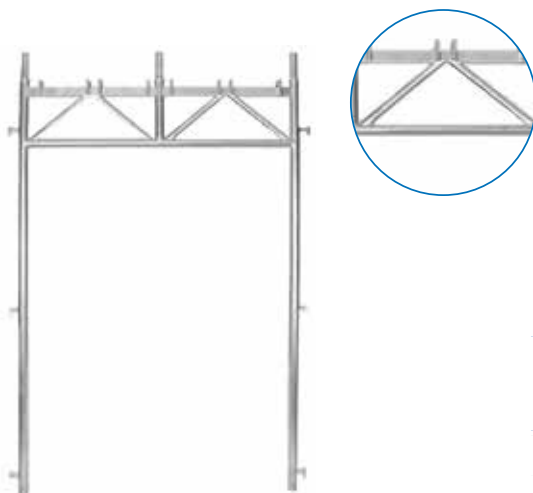
## Model P okvir (aluminij/čelik) / Model P frame (aluminium/steel)

ALUMINIJ /  
ALUMINIUM



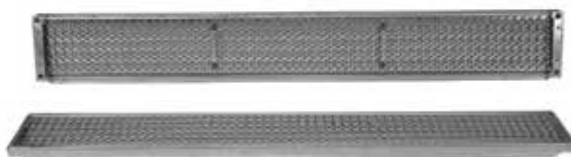
Visina Height (m)	Širina Width (m)	Težina Weight (kg)
2,00	0,74	18,00
1,00	0,74	10,50
0,50	0,74	8,50

## Prolaz za pješake / Steel walkthrough frame



Visina Height (m)	Širina Width (m)	Težina Weight (kg)
2,20	1,50	36,00

## Čelična podnica / Steel platform



Dužina Length (m)	Širina Width (m)	Težina Weight (kg)
3,00	0,32	19,00
2,50	0,32	16,50
2,00	0,32	13,40

## Drvena podnica / Wood platform



Dužina Length (m)	Širina Width (m)	Težina Weight (kg)
3,00	0,32	21,60
2,50	0,32	18,20

## Alu-šperploča podnica s ljestvama / Alu-plywood access with ladder



Dužina Length (m)	Širina Width (m)	Težina Weight (kg)
3,00	0,64	29,00
2,50	0,64	25,00

## Aluminijska podnica s ljestvama / Aluminium access with ladder



Dužina Length (m)	Širina Width (m)	Težina Weight (kg)
3,00	0,64	25,00
2,50	0,64	23,00





## Jednostruka čelična zaštitna ograda / Steel guard rail



Dužina Length (m)	Težina Weight (kg)
3,00	5,30
2,50	4,40
2,00	3,40

## Bočna ograda / Side guard rail



ČELIK /  
STEEL

Širina Width (m)	Težina Weight (kg)
0,74	5,30

## Dijagonala za okvir / Diagonal for frame



ČELIK / STEEL

Dužina Length (m)	Težina Weight (kg)
3,66	10,80
3,26	9,70
2,88	8,50

## Središnji L stup (čelik) / *Frame type L (steel)*



Visina Height (m)	Širina Width (m)	Težina Weight (kg)
1,00	0,74	5,50
2,00	0,74	9,00

## Središnji stup / *Guard rail post*



Visina Height (m)	Težina Weight (kg)
1,00	4,50
2,00	8,05

## Okvir ograde početni/završni / *Final frame*



**ČELIK / STEEL**

Visina Height (m)	Širina Width (m)	Težina Weight (kg)
1,00	0,74	10,00





## Priključnica ograde / Guard rail coupler



Težina  
Weight  
(kg)

0,80

## Drvena zaštitna bočna ograda / Side wooden toe board



Dužina  
Length  
(m)

0,74

Širina  
Width  
(m)

0,15

Težina  
Weight  
(kg)

1,40

## Drvena zaštitna ograda / Wooden toe board



Dužina  
Length  
(m)

3,00

2,50

2,00

Širina  
Width  
(m)

0,15

0,15

0,15

Težina  
Weight  
(kg)

5,60

4,70

3,80



Početak dijagonale / Start element (bracing strap)



Težina  
Weight  
(kg)

0,70

Konzola 0,32 / Console 0,32



Težina  
Weight  
(kg)

5,10

Konzola 0,64 m / Console 0,64 m



Težina  
Weight  
(kg)

8,30





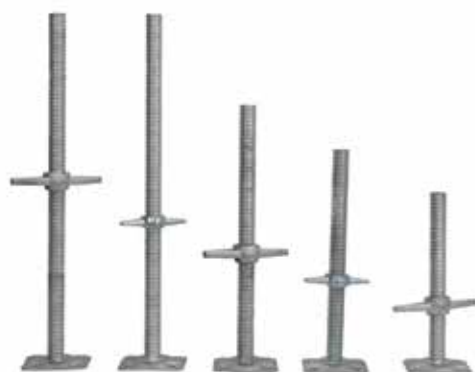
Konzola 0,74 m / Console 0,74 m



Težina  
Weight  
(kg)

9,00

Stopa / Jack base



Visina  
Height  
(m)

0,50

0,80

Težina  
Weight  
(kg)

3,35

4,50

Priljučnica / Coupler



Težina  
Weight  
(kg)

1,20

## Okretna priključnica / Swivel coupler



Težina  
Weight  
(kg)

1,30

## Ukruta i tipla za zid / Anchor



Dužina  
Length  
(m)

Težina  
Weight  
(kg)

0,40

2,00

0,60

2,40

1,00

3,90

## Ključ dvostrani za skelu / Scaffold ratchet spanner



Težina  
Weight  
(kg)

0,50





## Osigurač okvira / Pig tail pin



Težina  
Weight  
(kg)

0,10

## Vijak s okom / Eye bolt



Dužina  
Height  
(m)

0,23

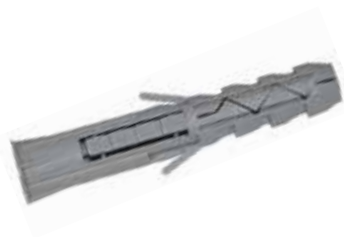
0,30

Težina  
Weight  
(kg)

0,28

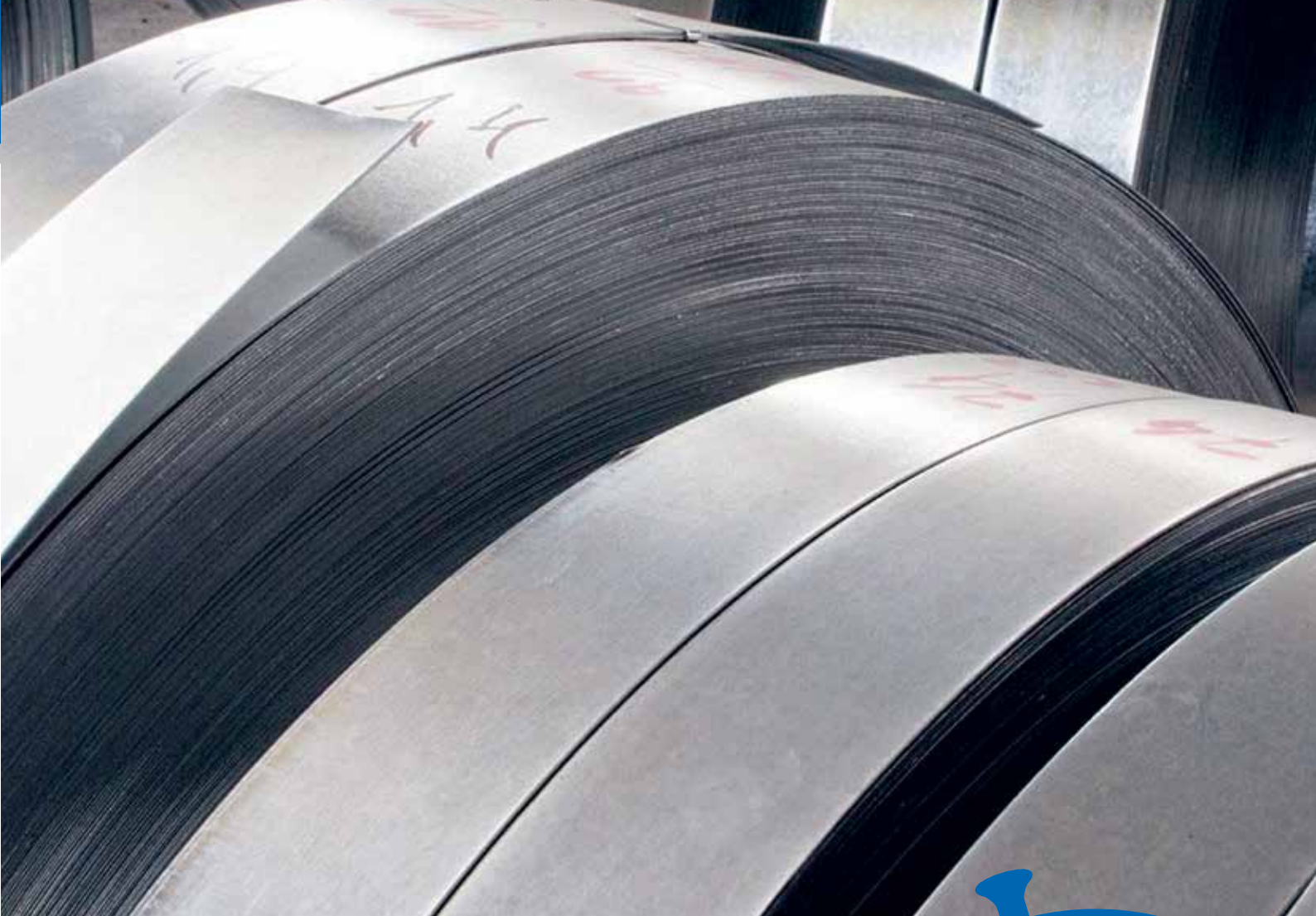
0,33

## Tipla za vijak sa okom / The dowel



Težina  
Weight  
(kg)

0,01



**POCINČANA TRAKA I SPOJNICE**  
*ZINCAL TAPE AND JOINTS*



## Spojnice križna / Cross coupling



Dimenzija A Dimension A (mm)	Dimenzija B Dimension B (mm)
60x60	60
80x80	80

## Gromobranska traka / Lightning strip



Dužina Length (mm)	Debljina / Thickness (mm)
	4
Težina / Weight (kg/m)	
25	0,800
30	0,961
40	1,285

## Armaturne mreže

### Metal framework mesh

TIP TYPE	PROMJER DIAMETER		OTVOR HOLE		DIMENZIJA MREŽE MESH DIMENSIONS	
	uzdužno	poprečno	uzdužno	poprečno	dužina	širina
mreže						
Q 131	5	5	150	150	6000	2150
Q 188/189	6	6	150	150	6000	2150
Q 283	6	6	100	100	6000	2150
Q 257	7	7	150	150	6000	2150
Q 308	7	7	125	125	6000	2150
Q 385	7	7	100	100	6000	2150
Q 335	8	8	150	150	6000	2150
Q 503	8	8	100	100	6000	2150
Q 424	9	9	150	150	6000	2150
Q 636	9	9	100	100	6000	2150
Q 524	10	10	150	150	6000	2150
Q 785	10	10	100	100	6000	2150
R 131	5	5	150	200	6000	2150
R 196	5	5	100	250	6000	2150
R 188/189	6	5	150	250	6000	2150
R 283	6	5	100	250	6000	2150
R 385	7	5	100	250	6000	2150
R 335	8	5	150	250	6000	2150
R 503	8	5	100	250	6000	2150
R 636	9	6	100	250	6000	2150
R 424	9	6	150	250	6000	2150
R 524	10	6	150	250	6000	2150
R 785	10	7	100	250	6000	2150

REBRASTO ŽELJEZO U ŠIPKAMA  
RIB IRON IN BARS

promjera 6-32 mm, dužine 6-12 m

## Odstojnici za armaturu

### Spacers for metal framework mesh

Odstojnik kružni 25 mm/1 za armaturnu mrežu /  
Circular spacer 25 mm/1 for metal framework mesh



Prstenasti držači razmaka - 12 međusobno povezanih prstena koji se prije montiranja rastave i razbacaju po oplati.

*Ring spacers - 12 mutually connected rings which are disassembled and scattered on the framework prior to installation.*

Odstojnik prstenasti 25 mm za okomito i horizontalno armiranje 4-12 mm /  
Ring spacer 25 mm for vertical and horizontal metal framework mesh 4-12 mm



Držači razmaka PVC za okomito armiranje. Za željezne šipke promjera 4-12mm.

*PVC spacers for vertical and horizontal metal framework mesh. For iron bars 4-12 mm in diameter.*

Odstojnik trakasti 25 mm/2 m za armaturnu mrežu /  
Strip spacer 25 mm/2 m for metal framework mesh



Trakasti podmetači U-oblika za donje armiranje. Velike razmaknice omogućavaju otjecanje betona.

*U-shaped strip pads for lower metal framework mesh. Large spacers allow concrete to drain.*

Odstojnik linearni 25 mm/0,5 m (160 kom/1) SPL25 za armaturnu mrežu /  
Linear spacer 25 mm/0,5 m (160 pcs/1) SPL25 for metal framework mesh



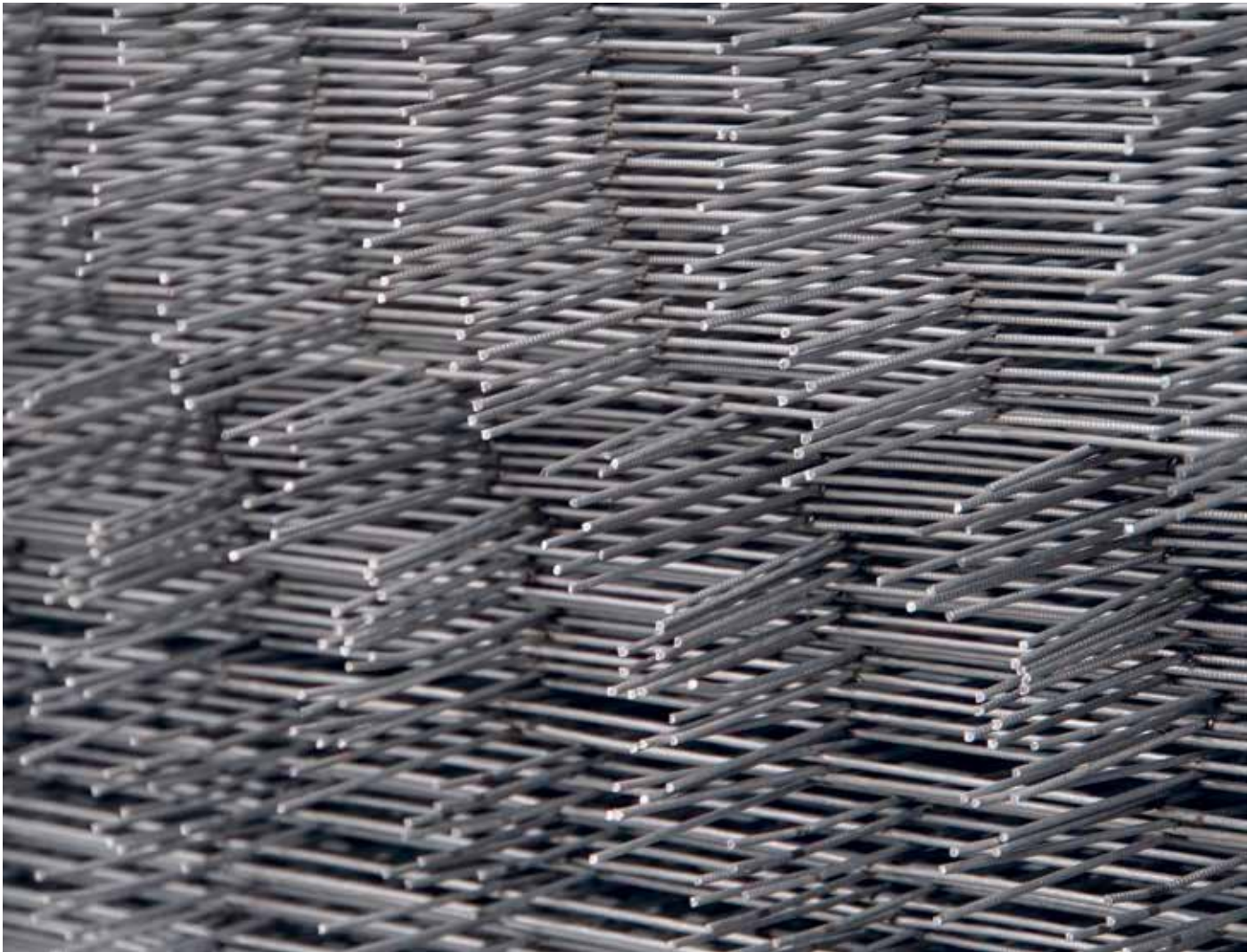
Podnosi velika opterećenja zahvaljujući svojem obliku i veličini. Bočne i vodoravne rupe omogućuju savršeno prodiranje betona. Može se koristiti i okrenut naglavce na izolacijskim panelima za podove.

*Withstands heavy loads due to its shape and size. The side and horizontal holes allow the concrete to penetrate perfectly. It can also be used upside down on floor insulation panels.*



## *Estrih mreža (rabitz) 1000x2000 mm Zn*

## *Rabitz (square) wire mesh 1000x2000 mm Zn*



**Upotrebljava se kod izrade betonskih glazura. Izrađuje se od pocinčane žice debljine 1,80 mm.**

**Dimenzija ploče: 1000x2000 mm.**

*Used in the construction of concrete glazes. Made of galvanized wire 1.80 mm thick.  
Panel size: 1000x2000 mm.*

## Oplata / Formwork panel



Letva za oplatu s kukom "U" Zn / Formwork with hook "U" Zn



Širina Width (mm)	Pakiranje Packaging (kom/pcs)
500	48
1000	48
1500	36

Distancer za oplatu i klin za oplatu Fe / Formwork spacer and pin Fe



Širina Width (mm)	Pakiranje Packaging (kom/pcs)
100	100
150	100
200	100
250	100
300	100
350	100
400	100
450	100

Proizvod Product	Pakiranje Packaging (kom/pcs)
klin za distancer oplata / formwork spacer pin	100

## Konzola za stup oplate Zn / Formwork pillar console Zn



Širina Width (mm)	Pakiranje Packaging (kom/pcs)
150-450	8/1

## Podupirač građevinski za oplatu / Support for formwork



Visina Height (m)	Pakiranje Packaging (kom/pcs)
2,00-3,60	50
2,20-4,00	50
3,20-5,00	50

## *HTZ oprema / Safety equipment*



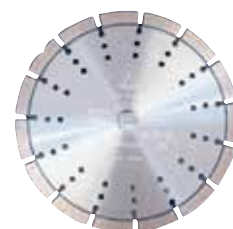
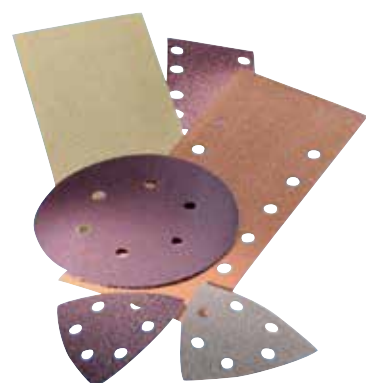
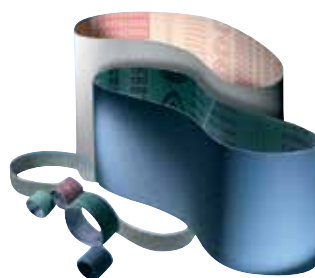
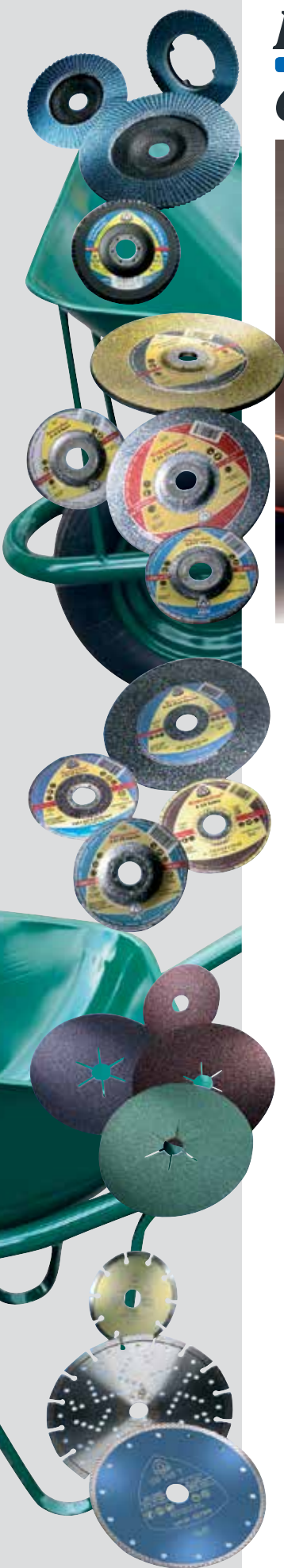
**RADNA ODJEĆA | KIŠNI PROGRAM | ZAŠTITA RUKU | ZAŠTITA NOGU | ZAŠTITA OČIJU**  
**| VARILAČKI PROGRAM | ZAŠTITA DIŠNIH ORGANA | JEDNOKRATNI PROGRAM**  
**WORKWEAR | RAIN ASSORTMENT | HAND PROTECTION | FEET PROTECTION | EYE PROTECTION |**  
**WELDING ASSORTMENT | RESPIRATORY PROTECTION | DISPOSABLE PROTECTION ASSORTMENT**



# *Ručni električni alat / Power tools*



***Pribor za rezanje, bušenje, varenje***  
***Cutting, drilling, welding accessories***





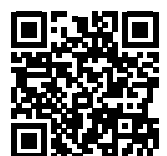
Reta d.o.o.  
Zagrebačka ulica 15K  
47 000 Karlovac

Odjel metala  
047 637 751  
091 424 1113

Odjel građevine  
047 638 210  
091 637 1112

Odjel maloprodaje  
047 638 220  
099 323 9562

[www.reta.hr](http://www.reta.hr)



*Naši proizvodi za Vaš uspjeh*



**Reta d.o.o.**

Zagrebačka 15K, 47 000 Karlovac  
T: +385 (47) 638 220

Kontakt veleprodaja metali:  
[metali@reta.hr](mailto:metali@reta.hr)

Kontakt veleprodaja građevina:  
[gradjevina@reta.hr](mailto:gradjevina@reta.hr)